

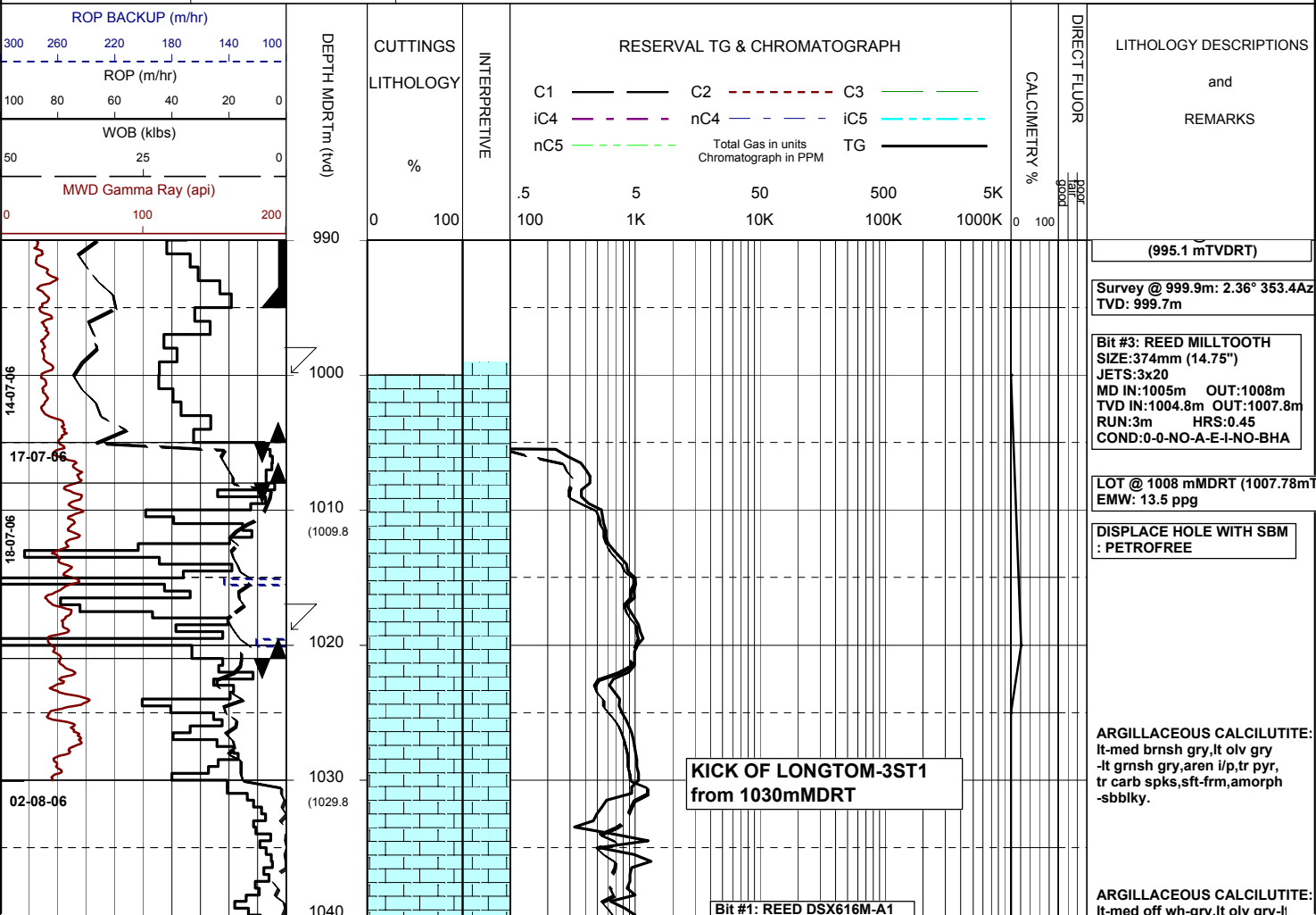


# MASTERLOG LONGTOM-3ST1



GENERAL	POSITION	HOLE / CASING INFO	DATE / DEPTH	ENGINEERS
Country : AUSTRALIA	Latitude : 38°05'34.63"S	914mm(36") hole to: 111.8m	Spud Date : 11-07-2006	T. N. KYAW
Permit : VIC/P54	Longitude : 148°18'41.52"E	559mm(22") hole to: 1005m	Total Depth Date : XX-XX-2006	A. DUNN
Field : LONGTOM	UTM Co-ord X (m E): 615006	241mm(9 1/2") hole to: m	Total Depth (mMDRT): m	D. ADDERLEY
Basin : GIPPSLAND	UTM Co-ord Y (m N): 5783059.3	762mm(30") Cond. to: 110.8m	True Vertical Depth (mTVDSS): m	
Well Type : APPRAISAL	RT to LAT (m): 21.5	406mm(16") Csg. to: 995.32m	Log Scale : 1/ 500	
Rig: OCEAN PATRIOT	RT to Sea Bed (m): 78.2		Final Status : ??	

ABBREVIATIONS	LITHOLOGY LEGEND	ENGINEERING LEGEND
<p>MW Mud Weight</p> <p>FV Funnel Viscosity</p> <p>PV Plastic Viscosity</p> <p>YP Yield Point</p> <p>Gel Gel Strength</p> <p>WL Water Loss</p> <p>KCl Potassium Chloride</p> <p>Cl Chlorides</p> <p>Incl Inclination</p> <p>Az Azimuth</p> <p>WOB Weight on Bit (klbs)</p> <p>RPM Rotations Per Min</p> <p>FLW Flow Rate (gpm)</p> <p>SPP Pump Pressure (psi)</p> <p>RR Re-Run Bit</p> <p>TG Trip Gas</p> <p>CG Connection Gas</p> <p>BG Background Gas</p> <p>DGP Drilled Gas Peak</p> <p>MM Mud Motor</p>	<p>Claystone</p> <p>Siltstone</p> <p>Shale</p> <p>Fine SST</p> <p>Medium SST</p> <p>Coarse SST</p> <p>Mari</p> <p>Clay, Limestone</p> <p>Limestone</p> <p>Dolomite</p> <p>Coal</p> <p>Volcanic</p> <p>Lithic Fragment</p> <p>Foraminifera</p> <p>Fossils</p> <p>Bryozoa</p> <p>Sponges</p> <p>Brachiopoda</p> <p>Cement</p> <p>Glauconite</p> <p>Pyrite</p> <p>Iron Minerals</p> <p>Mica</p> <p>Siderite</p>	<p>Shoe</p> <p>Deviation survey</p> <p>DST</p> <p>TEST Test</p> <p>Sidewall Core</p> <p>Core</p> <p>DOLOMITE</p> <p>RFT</p> <p>FIT</p> <p>Mud loss</p> <p>Mud gain</p>



SIZE:343mm (13.5")  
JETS:6x18  
MD IN:1030m OUT:XXXXm  
TVD IN:1029.7m OUT:XXXXm  
RUN:XXXm HRS:XX  
COND:

grnsh gry, aren i/p, sft frm,  
amorph-sbbkly.

